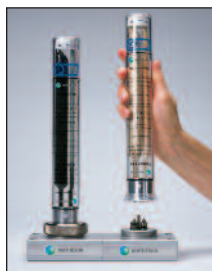
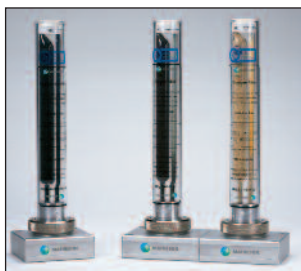




# 334 PUR-Gas™ Cartridge Purifier Systems



Easy to change cartridge. No tools required.

### Description

Point-of-use, high-performance gas purifier system designed to provide superior contaminant reduction and utilizes removable purifier cartridges to produce 99.9999% purity. The basic system consists of a purifier cartridge installed on a compatible baseplate. The purifiers can be installed and replaced without interrupting the operating and analytical performance of the system. The metal and glass construction of the purifier cartridges eliminates diffusion of potential contaminants into the gas stream. During replacement of the purifier cartridges, check valves automatically close off the system to the atmosphere, further minimizing the introduction of contaminants.

### Applications

- Point-of-use purification of all gases utilized with the operation of an FID equipped GC.
- Ideal for purification of carrier gases used with GC/MS, ECD, PID and NPD detectors.
- Removal of hydrocarbons and moisture from FID fuel gases.
- Purification of Nitrogen for LC/MS instruments.

### Design Features/Components

- Easy installation enables "no tools required" purifier changeout.
- Multiple purifier baseplates allow customization of the system for specific applications.
- Replacement purifiers can be installed within seconds, minimizing instrument downtime.
- Check valves in baseplate design prevent diffusion of contaminants.
- Removal of hydrocarbons, oxygen and moisture can be performed with a single filter.
- Visual indicator on Moisture and Oxygen cartridges signals changeout to maintain uninterrupted service.

### Baseplate Design & Selection Materials of Construction

|               | Baseplate  | Purifier Cartridge   |
|---------------|--|--|
| Body:         | Aluminum (Anodized)  | Internal Structure:<br>Borosilicate Glass<br>External Housing:<br>Polycarbonate Sleeve |
| Fittings:     | Standard -1/8" Brass<br>Compression<br>Optional - 1/4" Brass,<br>1/8" or 1/4" SS | —  |
| Locking Ring: | Chrome Plated Aluminum   | —  |
| O-Rings:      | Viton  | —  |

### Specifications

|                                  |   |
|----------------------------------|---|
| Maximum Operating Pressure:      | 150 psig  |
| Maximum Flow Rate:               | GCMS Systems: 3 L/min<br>LCMS Systems: 20 L/min |
| Dimensions & Weight (L x W x H): |   |
| 1-position baseplate             | 3.125" x 3.56" x 1.12" (1.65 lbs)               |
| 2-position baseplate             | 3.125" x 7.87" x 1.12" (3.4 lbs)                |
| 3-position baseplate             | 3.125" x 11.81" x 1.12" (5 lbs)                 |
| Purifier Cartridge (new)         | 1.5" dia. x 10" H (0.60 lbs)                    |
| Purifier Cartridge Capacity:     | (see table below)                               |

| Type of Purifier                     | Outlet Gas Quality | Usable for                       | Indicator Color Change          | Capacity H <sub>2</sub> O (gr) | O <sub>2</sub> (ml) | Hydrocarbons  |
|--------------------------------------|--------------------|----------------------------------|---------------------------------|--------------------------------|---------------------|---------------|
| Moisture                             | > 6.0              | Inert carrier gas, air, hydrogen | Brown to white                  | 7.2                            |                     |               |
| Oxygen                               | > 6.0              | Inert carrier gas                | Green to grey                   |                                | 1000                |               |
| Hydrocarbon                          | > 6.0              | Inert carrier gas, air, hydrogen | No indicator                    |                                |                     | Not specified |
| Combi (moisture/hydrocarbon)         | > 6.0              | Inert carrier gas, air, hydrogen | Brown to white                  | 3.6                            |                     | Not specified |
| Triple (moisture/oxygen/hydrocarbon) | > 6.0              | Inert carrier gas                | Brown to white<br>Green to grey | 1.8                            | 500                 | Not specified |

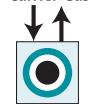
### Purifier System Configurations (refer to illustration below)

The PUR-Gas™ Purifier Systems are available in several baseplate configurations to address a wide variety of analytical applications. The baseplates can be permanently mounted to lab bench surfaces and are available in 1, 2 or 3 purifier positions, allowing the end-user to custom design a gas purifier system for a specific application; or provide the same purifier in a multiple system arrangement to prevent uninterrupted service and changeout convenience.



Several baseplate designs allow multiple purifier configurations to customize a specific system for your application

Carrier Gas



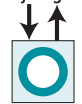
Triple Purifier  
Moisture/Oxygen/  
HydroCarb

Triple Kit for MS-ECD-NPD a.o.  
Triple purifier on 1-position baseplate



1-position baseplate

Hydrogen

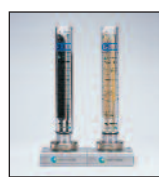


Combi Purifier  
Moisture/HydroCarb

Air

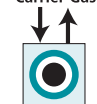


Burnergas Kit for FID  
2x Combi purifier on 2-position baseplate



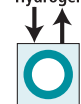
2-position baseplate

Carrier Gas



Triple Purifier  
Moisture/Oxygen/  
HydroCarb

Hydrogen

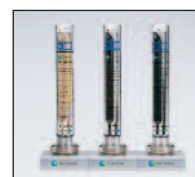


Combi Purifier  
Moisture/HydroCarb

Air



Complete Purification Kit I for FID  
High Capacity: Triple + 2x Combi purifier on 3-position baseplate



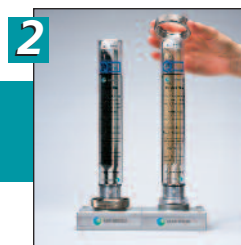
3-position baseplate



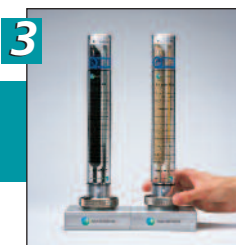
## Cartridge Changeouts are Easy as 1, 2, 3!



Snap cartridge onto base



Replace locking ring



Tighten locking ring

### Ordering Information

#### Analytical Instrument Gas Purification Systems (Cartridge(s) and Baseplate)

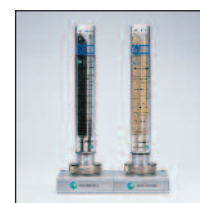
| Model No. | Description   | Baseplate Type | Application   |
|-----------|---|----------------|---|
| PUR-0229  | GC/MS Carrier Gas Purification System (includes 1-position baseplate with 1/8" brass fittings and (1) triple purifier cartridge for carrier gas)  | 1-Position     | Standard 1-Position System for purifying the carrier gas used in GC/MS, ECD and NPD detectors             |
| PUR-0233  | Same as above with 1/4" Brass fittings  |                |   |
| PUR-0237  | Same as above with 1/8" SS fittings   |                |   |
| PUR-0241  | Same as above with 1/4" SS fittings   |                |   |
| PUR-0230  | GC/MS FID Fuel Gas Purification System (includes 2-position baseplate, with 1/8" brass fittings and (2) combi purifiers for both hydrogen and zero air gases)   | 2-Position     | Standard 2-Position System for purifying both hydrogen and zero air fuel gases used in an FID operated GC |
| PUR-0234  | Same as above with 1/4" Brass fittings  |                |   |
| PUR-0238  | Same as above with 1/8" SS fittings   |                |   |
| PUR-0242  | Same as above with 1/4" SS fittings   |                |   |
| PUR-0231  | GC/MS FID Gas Purification System (includes a 3-position baseplate; with 1/8" brass fittings, (1) triple purifier cartridge for carrier gas and (2) combi purifiers for both hydrogen and zero air gases) | 3-Position     | Standard 3-Position System for purifying all gases used in an FID operated GC                             |
| PUR-0235  | Same as above with 1/4" Brass fittings  |                |   |
| PUR-0239  | Same as above with 1/8" SS fittings   |                |   |
| PUR-0243  | Same as above with 1/4" SS fittings   |                |   |
| PUR-0232  | LC/MS Gas Purification System (includes 2-position baseplate, with 1/4" brass fittings and (2) charcoal purifiers for nitrogen gas)   | 2-Position     | Unique 2-Position System for purifying the nitrogen gas utilized in LC/MS instruments                     |
| PUR-0244  | Same as above with 1/4" SS fittings   |                |   |

#### Replacement Purifier Cartridges

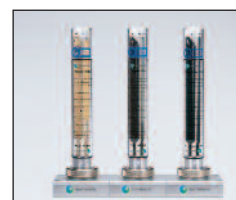
| Model No. | Description  |
|-----------|--|
| CTG-0050  | Moisture Cartridge   |
| CTG-0051  | Oxygen Cartridge   |
| CTG-0052  | Hydrocarbon Cartridge  |
| CTG-0053  | Triple Cartridge (O <sub>2</sub> / H <sub>2</sub> O / HC)      |
| CTG-0054  | Combi Cartridge (H <sub>2</sub> O / HC)                        |
| CTG-0055  | LC/MS Charcoal Cartridge Set (2)                               |
| CTG-0056  | Moisture 2-Pack Bundle   |
| CTG-0057  | Oxygen 2-Pack Bundle   |
| CTG-0058  | Hydrocarbon 2-Pack Bundle                                      |
| CTG-0059  | Triple 2-Pack Bundle   |
| CTG-0060  | Combi 2-Pack Bundle  |
| CTG-0061  | GC/MS Total Gas Purifier Bundle; 1-Triple + 2-Combi Cartridges |
| CTG-0062  | Triple Filter (Helium Packed)                                  |
| CTG-0063  | Triple Filter (Helium Packed), 2 Pack Bundle                   |



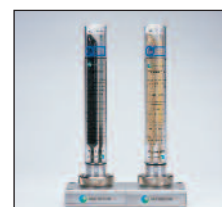
Carrier Gas  
Purification System



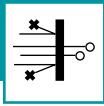
FID Fuel Gas  
Purification System



FID Gas Purification  
System



LC/MS Nitrogen Gas  
Purification System



**Ordering Information**

**System Baseplates** (No purifier cartridges included; customize your own design)

| Model No. | Description  |
|-----------|--|
| BAS-0014  | 1-Position Standard Baseplate with 1/8" Brass Fittings |
| BAS-0015  | 2-Position Standard Baseplate with 1/8" Brass Fittings |
| BAS-0016  | 3-Position Standard Baseplate with 1/8" Brass Fittings |
| BAS-0017  | 2-Position LC/MS Baseplate with 1/4" Brass Fittings    |
| BAS-0018  | 1-Position Standard Baseplate with 1/4" Brass Fittings |
| BAS-0019  | 2-Position Standard Baseplate with 1/4" Brass Fittings |
| BAS-0020  | 3-Position Standard Baseplate with 1/4" Brass Fittings |
| BAS-0022  | 1-Position Standard Baseplate with 1/8" SS Fittings    |
| BAS-0023  | 2-Position Standard Baseplate with 1/8" SS Fittings    |
| BAS-0024  | 3-Position Standard Baseplate with 1/8" SS Fittings    |
| BAS-0026  | 1-Position Standard Baseplate with 1/4" SS Fittings    |
| BAS-0027  | 2-Position Standard Baseplate with 1/4" SS Fittings    |
| BAS-0028  | 3-Position Standard Baseplate with 1/4" SS Fittings    |
| BAS-0029  | 2-Position LC/MS Baseplate with 1/4" SS Fittings       |

**Options**

| Model No. | Description                |
|-----------|----------------------------|
| CON-0577  | O-ring Replacement Set     |
| CON-0578  | Wall-Mount Bracket Fixture |



Baseplate back indicating inlet and outlet